



# ASI Andromeda<sup>TM</sup> SYSTEMS INCORPORATED

Your Supportability Teammate

## PdM Services

Predictive maintenance / Condition monitoring

We provide expertise for the application of predictive maintenance technologies to physical assets. As your supportability teammate we assist you in the development, implementation, and execution of an effective Predictive Maintenance Program.

### SOLUTIONS

- PdM program development and planning
- Monitoring system design and installation
- Data collection, analysis and management
- Process and procedure documentation
- PdM training
- Vibration analysis
- Thermal imaging
- Ultrasonic inspection
- Oil analysis
- Non-Destructive Testing
- Motor circuit analysis
- Predictive algorithm developments
- Prognostics & Health Management

### BENEFITS

- Reduced maintenance costs and asset downtime
- Minimize risk of downtime in critical assets
- Maximize asset useful life
- Global visibility of asset health and condition
- Improve ability to plan and optimize the utilization of resources

[www.androsysinc.com](http://www.androsysinc.com)



## PdM overview

Predictive maintenance, when applied to failure modes that have been evaluated through RCM analysis or maintenance engineering processes, provide a real-time indication of equipment condition. This allows maintainers ample time to react prior to function loss or catastrophic failure.

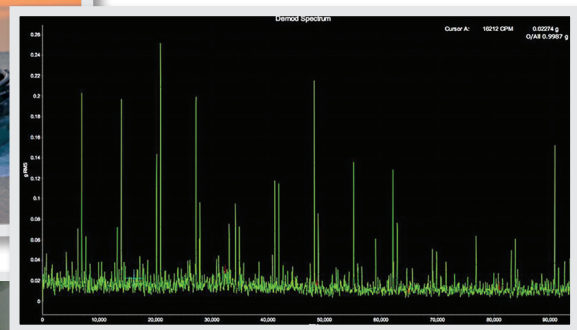
## What makes us different?

- Our analytical-based approach ensures that the right technology is applied to the appropriate failure modes on the right equipment
- We provide a business case for the implementation of specific PdM technologies
- We offer route based, baseline, and troubleshooting evaluations on fixed, remote, and mobile equipment
- Our staff includes ASNT/ISO certified PdM technicians
- Our solutions include fault-tracking and trending capabilities to assess asset condition over time and maximize useful life
- We utilize the latest technologies and equipment
- We integrate PdM solutions into existing maintenance management systems
- Web based software and mobile data collection capability allows for predictive maintenance data to be collected in austere/remote locations.
- Advanced prognostic capabilities & predictive analytics



## 40% LESS DOWNTIME

The Department of Energy's Operations & Maintenance Best Practice, Release 3.0, estimates that a predictive maintenance program, initiated from a totally reactive program, can provide upwards of 35% to 40% reduction in downtime.



[www.androsysinc.com](http://www.androsysinc.com) • [info@androsysinc.com](mailto:info@androsysinc.com) • 904.637.2020

**Corporate Headquarters:** 615 Lynnhaven Parkway, Suite 104, Virginia Beach, VA 23452 • 330 Crossing Blvd., Orange Park, FL 32073  
USA Offices: Crystal City, VA • Havelock, NC • Oklahoma City, OK • Patuxent River, MD • San Diego, CA