



ASI | Andromeda SYSTEMS INCORPORATED

Your Supportability Teammate

OptiAM[®]

Optimized Asset Management

OptiAM[®] is an Enterprise Asset Management Software/(EAM) system designed to be easy to use and quickly implemented while leveraging powerful predictive analytics and mobile technology. Originally developed for the exacting standards of the U.S. Military by experienced maintenance personnel, **OptiAM[®]** applies to a wide range of asset types in any industry environment.

BENEFITS

- Reduced implementation and training costs
- Highly competitive licensing costs
- Designed to support seamless integration with existing applications and databases
- Ability to customize interfaces and processes shortens learning curves
- Incorporates latest technology including mobile, Radio Frequency Identification (RFID) and Predictive Maintenances
- Simple and intuitive interface
- Latest web-based technology ensures maximum reliability and security

www.androsysinc.com



Why OptiAM®?

OptiAM® is a physical asset management solution designed to optimize the performance of high-value assets.



Optiam® is a powerful EAM solution designed to streamline maintenance, maximize asset performance, and reduce downtime for manufacturing companies.



Data is translated into actionable knowledge, enabling continuous improvement.

Built on Analytics

OptiAM® delivers results far beyond those of other enterprise asset management systems because it is built on the analytical power of Reliability Centered Maintenance (RCM) and Supportability Analysis, along with advanced optimization techniques. With these advanced tools and technologies at your fingertips, you can develop predictive maintenance and support programs that continuously improve over time.

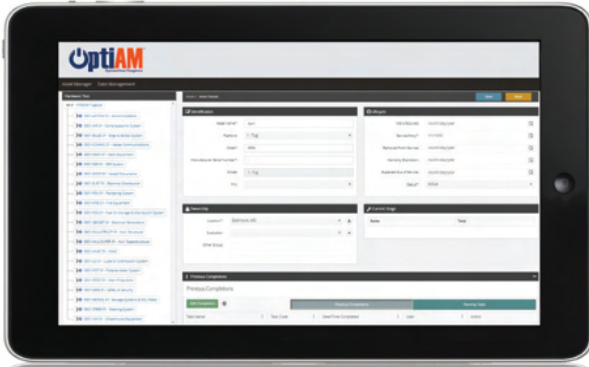
Asset Management

ISO-55000 defines a physical asset as equipment, inventory, or property owned by a person or company that has actual or potential value to that person or organization. Asset management is the coordinated activities of an organization to realize value from their assets. Asset management involves balancing costs, risks, opportunities and benefits of those assets. Optimization is the process of maximizing or minimizing a desired objective such as uptime or cost. Optimization also takes into account known constraints such as available manpower or maintenance facilities.

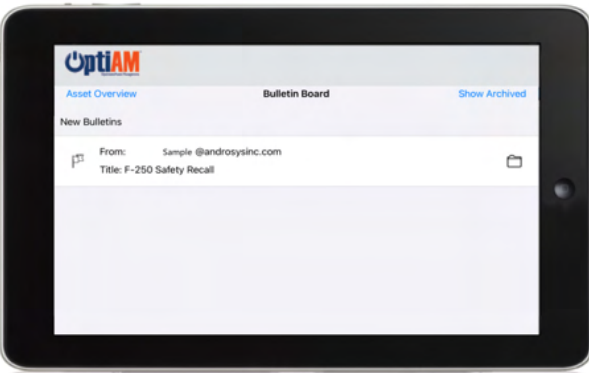
System Features



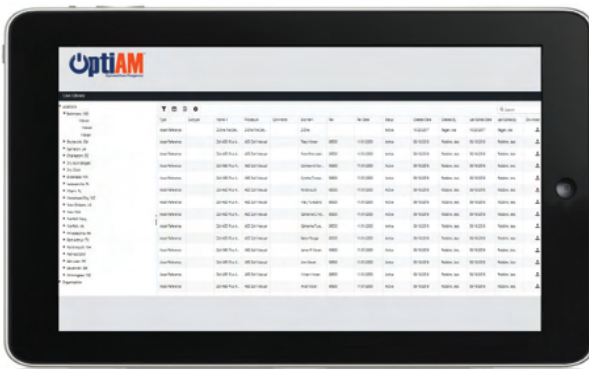
Simple and intuitive user interfaces that help you gain real-time status and insight into asset performance.



Asset Manager This module identifies, defines, and documents assets. You can add assets and define attributes such as serial number, location, warranty, and vendor information. The Asset Manager allows you to group assets into physical and functional hierarchies and identify assets via QR code or RFID tags. The interface provides the ability to quickly move an asset from one location to another, or from one user/team to another user/team.



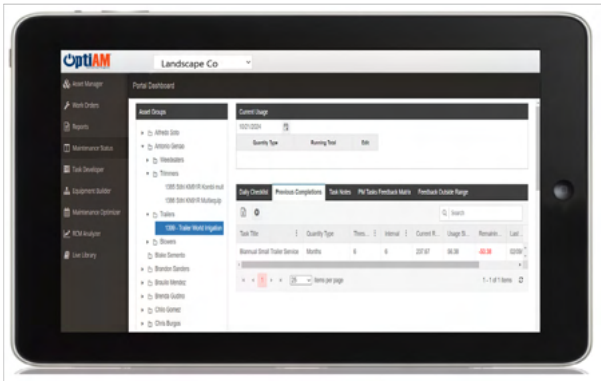
Bulletin Board Send safety related messages to specific users, user roles, or user permissions and locations. Users are required to read and acknowledge receipt of the bulletin, and an electronic record is stored for historical purposes.



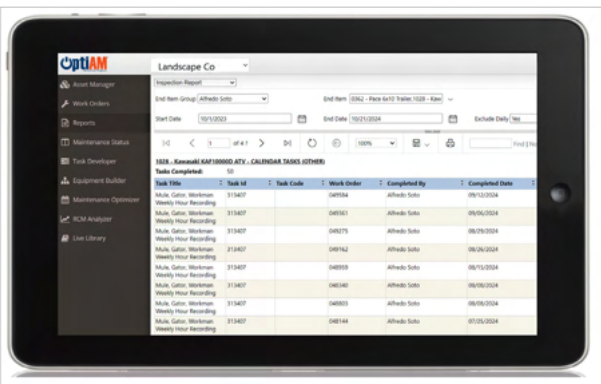
Live Library With the Live Library all available maintenance, operating procedures, and resource information is at the fingertips of any user in any location. Live Library stores, associates, and classifies technical data associated with individual assets providing an intuitive, searchable interface for easy access. Live Library also allows the user to add notes and comments to documents as well as utilizing a print function to promote knowledge sharing.



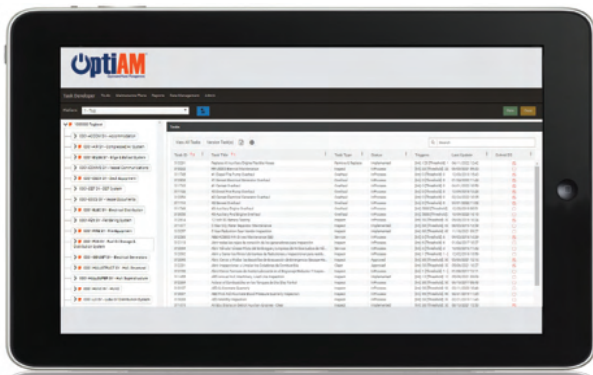
Checkout Logs Create custom equipment check-out logs, and quickly assign vehicles or equipment to a specific individual or team. Take pictures of the equipment from our mobile app at the time of checkout and record the equipment condition when it is assigned and returned to your facility.



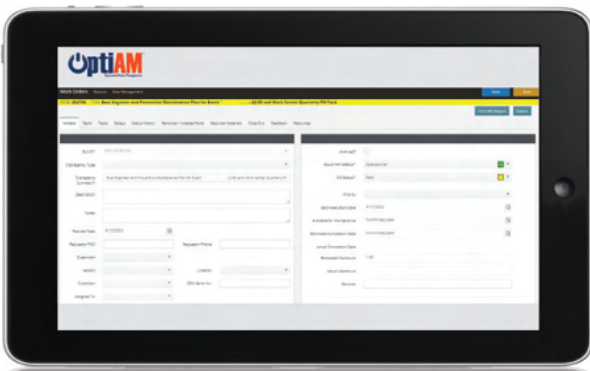
Dashboards Quickly view all your vehicles and equipment, and see what individual user or team has custody of the equipment. Check current miles and hours on your equipment, upcoming PM schedule and any alerts that your equipment may require maintenance.



Reporting Quickly access maintenance records and service history for any vehicle or piece of equipment. Reports show the date of planned or corrective maintenance, who performed the maintenance, what was done, and any readings or notes the technician recorded during the maintenance procedures.



Task Developer Develop the procedures and identify all of the resources needed to support your assets. Task Developer identifies resources needed to perform preventative and corrective maintenance tasks, and groups these tasks into maintenance packages. The Task Developer can also generate maintenance manuals, standard operating procedures (SOP) and emergency operating procedures (EOP). Revisions can be tracked and releases controlled. Task Developer also creates automated checklists for use with the **OptiAM® Mobile** applications.



Work Order Manager Optimize your maintenance schedule based on individual asset usage and environment to minimize down time or cost. The Maintenance Optimizer provides a full featured work order management system to schedule, manage, execute and document maintenance workload. It can also schedule actions such as contract or warranty renewals, planned upgrades and set alert triggers to generate automated work orders based on inputs from inspections, PdM or equipment monitoring systems. The Maintenance Optimizer provides near real-time equipment status to other modules in **OptiAM®**.

Additional Features

OptiAM® and OptiAM® Mobile Applications

Improve maintenance accuracy and efficiency by accessing technical data and documenting work at the point of performance. These applications allow you to operate offline or online via cellular or Wi-Fi connection. The applications manage and synchronize work orders at the equipment and gives you access to searchable technical data and attached multimedia such as instructional videos. You can scan parts for work orders and inventory control using optical codes or RFID. OptiAM® and OptiAM® Mobile use text and media capture to record results and capture electronic checklist results.



System requirements Developed using the latest rich Internet application technology and standard data formats, this solution's integrated data environment delivers an intuitive and consistent user experience across all major operating systems. It is available as an installed or software as a service (SaaS) system. Please refer to the systems requirements below:

INSTALLED

To host OptiAM® within your company's IT infrastructure, an installed option is offered. The system can be installed on a shared or dedicated server which can be either physical or virtual. The operating system must be Microsoft Windows Server 2016 or later which should include IIS v10 or later and .NET Framework 4 or later. OptiAM® also requires Microsoft SQL Server 2016 or later. If the mobile components are to include an additional license for Adobe Cold Fusion 10 or later must be provided. All backups and restoration would be the responsibility of your company IT department.

SaaS

OptiAM® is also offered as Software as a Service (SaaS). The many advantages of the SaaS solution include easier setup, lower initial cost, painless upgrades and no system administration. The hosted solution provides for data security, redundancy and backup. Servers are hosted in a professionally managed hosting facility that provides for redundant backup power, fire suppression, redundant tier 1 Internet access and biometric controlled physical access. We manage all software licensing for you.

What our clients are saying...

"In the past, we were only capable of updating maintenance plans annually. This was because the master document was kept locally, updated through the years as changes were required and distributed as hard copies to all locations. Now, because of OptiAM® we can make changes to PM tasks within minutes, which is immediately accessible to all users around the country."

- Moran Towing

"The OptiAM® team has been extremely helpful in explaining the software and identifying features that are applicable to our situation. The software is flexible and the team is open to our feedback. They are constantly making improvements to the software"

-Travis Martyn, LafargeHolcim

"As a small business owner, it's critical that we stay a step ahead when it comes to the service and maintenance of our entire brewing operation—from cleaning the boilers to servicing the canning line to making sure all of our vehicles get their oil changed on time. ASI's software program allows us, in one simple to use program, to do just that. It keeps our team on task both today, next week, next month and next year while protecting the investment we've made in our equipment. In short, this program saves us money,"

- L.J. Govoni, Big Storm Brewing





ASI | **Andromeda SYSTEMS** INCORPORATED

Your Supportability Teammate

Corporate Headquarters

440 Viking Drive, Suite 230, Virginia Beach, VA 23452
6255 Lake Gray Blvd. Suite 4, Jacksonville, FL 32244
(o) 904-402-8641

USA Offices

Crystal City, VA • Havelock, NC • Oklahoma City, OK
Patuxent River, MD • San Diego, CA

904.637.2020 • info@androsysinc.com



Andromeda Systems Incorporated (ASI) is an ISO-9001:2015 company committed to superior technical performance and excellence in customer satisfaction. Our mission is to assist asset and fleet managers in achieving optimal levels of economy, availability, and safety by developing and applying leading systems engineering tools, processes, and expertise.